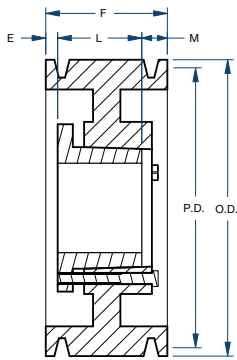


Sheaves

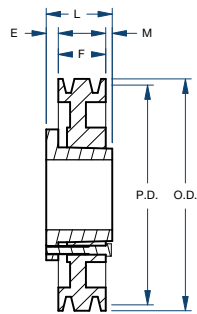


BLACKSTAR®

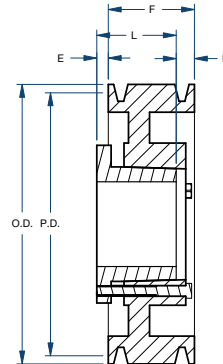
5V SERIES 5 GROOVE/QD



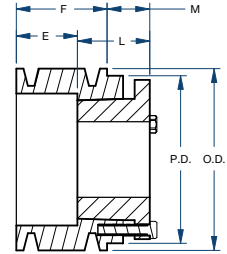
Type A



Type C



Type D



Type E

Part Number	Bushing	Bore Range	Type	Diameter (in)		Dimensions (in)				Weight less Bushing (lbs)
				Pitch P.D.	O.D.	E	F	L	M	
5-5V440SD	SD	1/2 – 2	E	4.30	4.40	2-19/32	3-3/4	1-13/16	21/32	8.9
5-5V465SD	SD	1/2 – 2	E	4.55	4.65	2-19/32	3-3/4	1-13/16	21/32	9.2
5-5V490SD	SD	1/2 – 2	A	4.80	4.90	21/32	3-3/4	1-13/16	1-9/32	10.1
5-5V520SD	SD	1/2 – 2	A	5.10	5.20	21/32	3-3/4	1-13/16	1-9/32	10.8
5-5V550SD	SD	1/2 – 2	A	5.40	5.50	21/32	3-3/4	1-13/16	1-9/32	12.0
5-5V590SK	SK	1/2 – 2-5/8	A	5.80	5.90	17/32	3-3/4	1-15/16	1-9/32	13.2
5-5V630SK	SK	1/2 – 2-5/8	A	6.20	6.30	17/32	3-3/4	1-15/16	1-9/32	15.9
5-5V670SF	SF	1/2 – 2-15/16	A	6.70	6.60	17/32	3-3/4	2-1/16	1-5/32	18.6
5-5V710SF	SF	1/2 – 2-15/16	A	7.00	7.10	17/32	3-3/4	2-1/16	1-5/32	21.7
5-5V750SF	SF	1/2 – 2-15/16	A	7.40	7.50	17/32	3-3/4	2-1/16	1-5/32	22.8
5-5V800E	E	7/8 – 3-1/2	A	7.90	8.00	19/32	3-3/4	2-3/4	13/32	23.7
5-5V850E	E	7/8 – 3-1/2	A	8.40	8.50	19/32	3-3/4	2-3/4	13/32	24.8
5-5V900E	E	7/8 – 3-1/2	A	8.90	9.00	19/32	3-3/4	2-3/4	13/32	26.3
5-5V925E	E	7/8 – 3-1/2	A	9.15	9.25	19/32	3-3/4	2-3/4	13/32	28.2
5-5V975E	E	7/8 – 3-1/2	A	9.65	9.75	19/32	3-3/4	2-3/4	13/32	32.0
5-5V1030E	E	7/8 – 3-1/2	A	10.20	10.30	19/32	3-3/4	2-3/4	13/32	33.0
5-5V1090E	E	7/8 – 3-1/2	A	10.80	10.90	19/32	3-3/4	2-3/4	13/32	35.0
5-5V1130E	E	7/8 – 3-1/2	A	11.20	11.30	19/32	3-3/4	2-3/4	13/32	36.5
5-5V1180E	E	7/8 – 3-1/2	A	11.70	11.80	19/32	3-3/4	2-3/4	13/32	38.0
5-5V1250E	E	7/8 – 3-1/2	A	12.40	12.50	19/32	3-3/4	2-3/4	13/32	40.8
5-5V1320E	E	7/8 – 3-1/2	A	13.10	13.20	19/32	3-3/4	2-3/4	13/32	42.3
5-5V1400E	E	7/8 – 3-1/2	A	13.90	14.00	19/32	3-3/4	2-3/4	13/32	44.6
5-5V1500E	E	7/8 – 3-1/2	A	14.90	15.00	19/32	3-3/4	2-3/4	13/32	48.2
5-5V1600E	E	7/8 – 3-1/2	A	15.90	16.00	19/32	3-3/4	2-3/4	13/32	51.2
5-5V1870F	F	1 – 4	D	18.60	18.70	3/32	3-3/4	3-3/4	3/32	70.2
5-5V2120F	F	1 – 4	D	21.10	21.20	1/32	3-3/4	3-3/4	1/32	89.0
5-5V2360F	F	1 – 4	D	23.50	23.60	1/32	3-3/4	3-3/4	1/32	105.0
5-5V2800F	F	1 – 4	D	27.90	28.00	1/32	3-3/4	3-3/4	1/32	123.0
5-5V3150J	J	1-1/2 – 4-1/2	C	31.40	31.50	7/16	3-3/4	4-5/8	7/16	151.0
5-5V3750J	J	1-1/2 – 4-1/2	C	37.40	37.50	7/16	3-3/4	4-5/8	7/16	190.0
5-5V5000J	J	1-1/2 – 4-1/2	C	49.90	50.00	7/16	3-3/4	4-5/8	7/16	278.0